

**EXPANSION & REMODEL FOR...  
LITHIA HONDA OF BEND  
2225 NE HIGHWAY 20  
BEND, OREGON**

NEAL HUSTON  
& ASSOCIATES  
ARCHITECTS INC.



520 SW Poverhouse Dr.  
Suite 621  
Bend, Oregon 97702  
541.389.0991  
info@nealhuston.com  
www.nealhuston.com

Copyright © 2012 by  
Neal Huston & Associates Architects Inc.

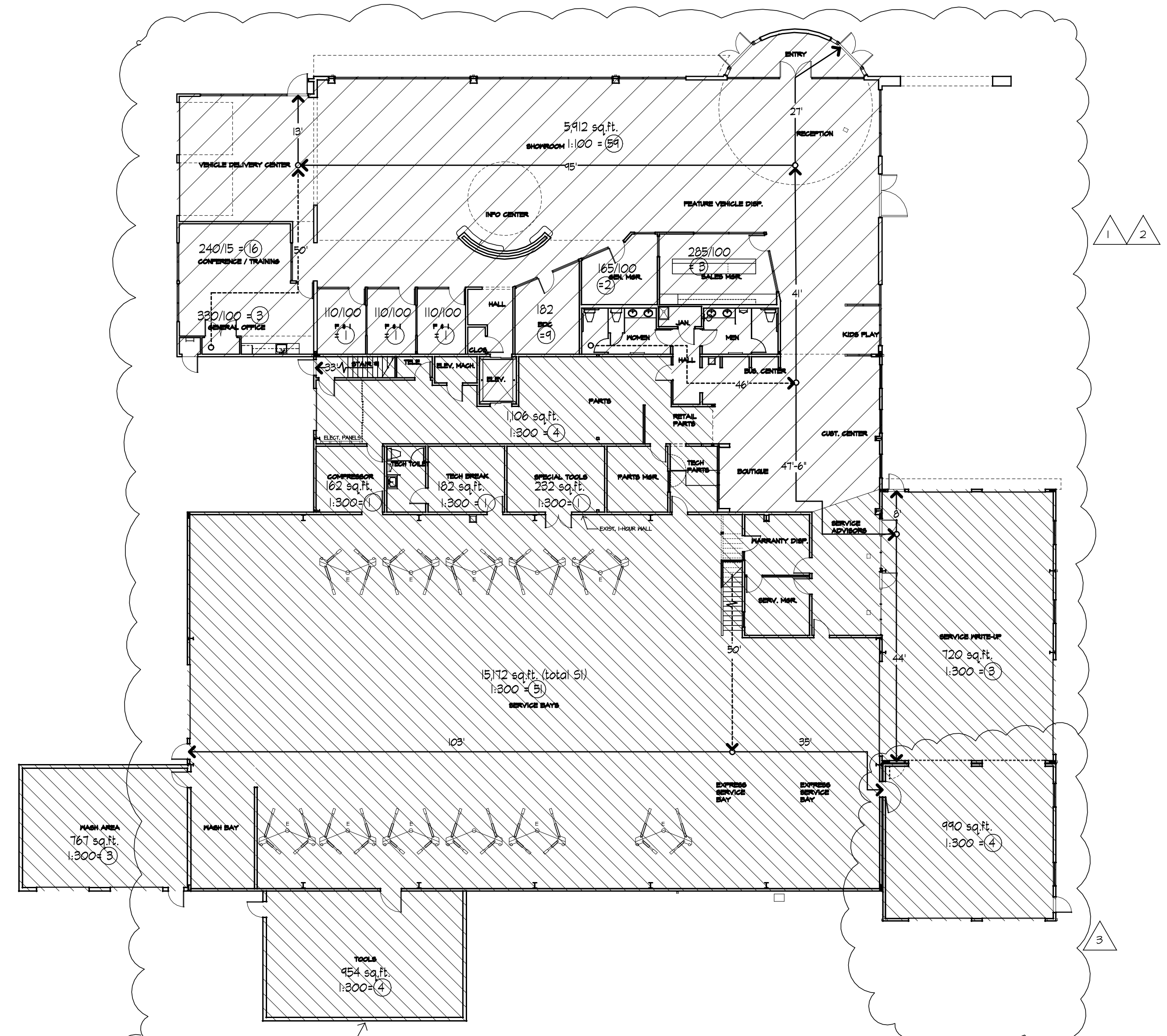
REVISIONS	DATE	DESCRIPTION
1	4/26/13	CITY CORRECTIONS
2	5/15/13	CITY CORRECTIONS
3	8/27/13	EXPRESS SERV. ADDTN
4		
5		
6		

DRAWINGS:  
LIFE SAFETY PLAN

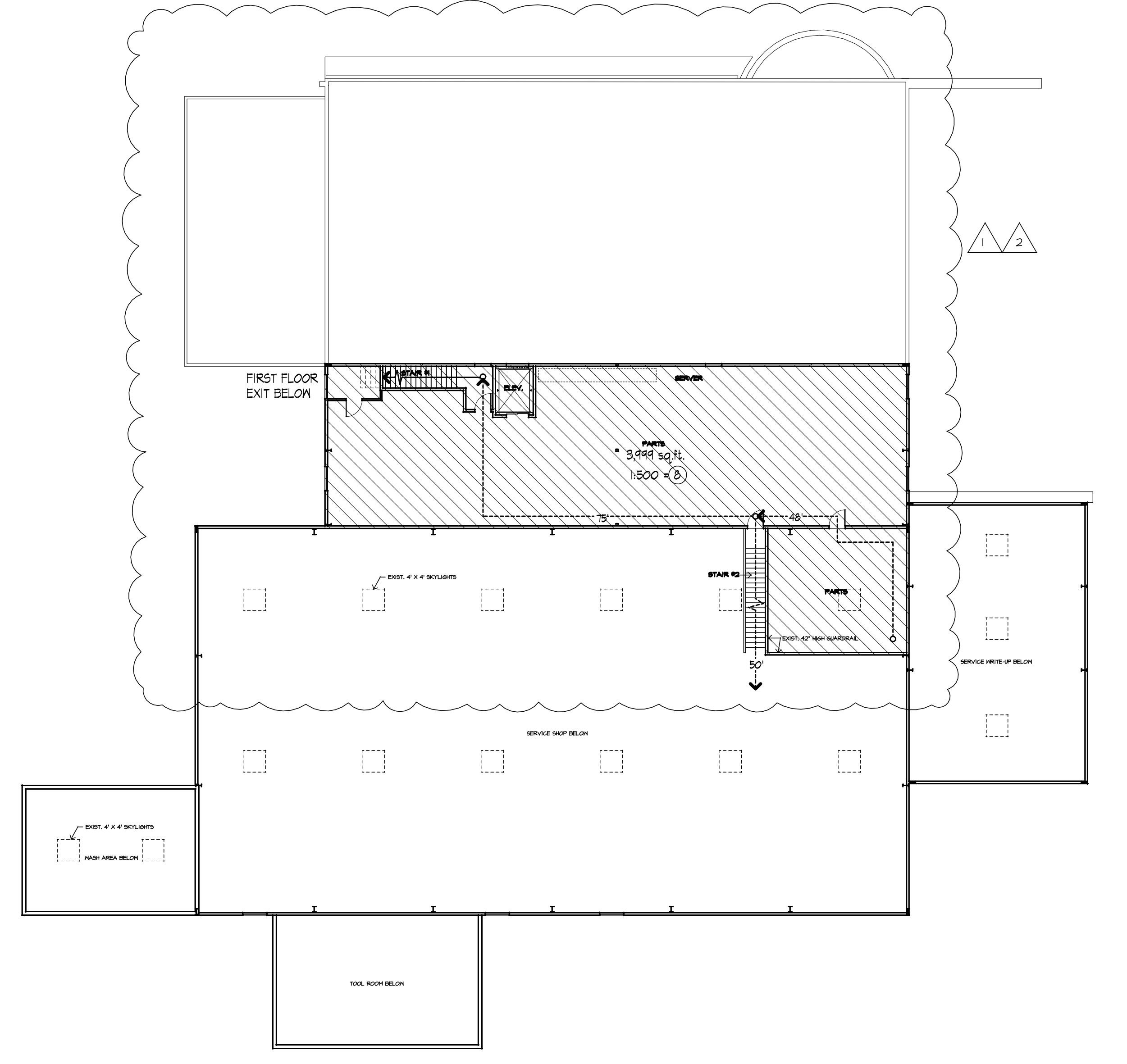
PROJECT #: 1116  
CAD FILE: 1116CODE12  
SCALE: 1/16" = 1'-0"  
DATE: 11/16/2012  
DRAWN BY: JS

**A0.1**

CONSTRUCTION SET:  
06/11/13



FIRST FLOOR PLAN



SECOND FLOOR PLAN

EXISTING 8" REINFORCED CMU WALL WITHOUT OPENINGS EXCEEDS THE REQUIREMENT FOR A 3-HOUR FIRE WALL PER OSGC TABLE 1201(2), 3.3.4(1)(g)

**OCCUPANCY DIAGRAM LEGEND**

- B (BUSINESS) OCCUPANCY GROUP
- S-1 (STORAGE) OCCUPANCY GROUP

**EGRESS DIAGRAM NOTES**

- OSGC 1016.1 EGRESS TRAVEL DISTANCE: 250' MAX FOR S1, 300' MAX. FOR B.
- OSGC 1014.3 COMMON PATH OF EGRESS TRAVEL: 100' MAX. FOR B & S EQUIPPED W/ FIRE SPRINKLERS.
- OSGC 1011.1, EXC (1), EXIT SIGNAGE NOT REQUIRED IN ROOMS THAT REQUIRE ONLY ONE EXIT.
- OSGC 1011.1, EXC (2), EXIT SIGNAGE NOT REQUIRED AT MAIN EXTERIOR EXIT DOORS.

**EGRESS DIAGRAM LEGEND**

- OCCUPANT LOADS - COMPUTED UNLESS NOTED "ACTUAL", OR "FIXED"
- ACCUMULATED OCCUPANT LOAD
- EXIT ACCESS PATH W/ DISTANCE BETWEEN BULLETS
- COMMON PATH OF EGRESS TRAVEL W/ DISTANCE BETWEEN BULLETS
- OCCUPANT LOAD RATIO
- EXIT SIGNAGE

**BUILDING CODE ANALYSIS**

**2010 OREGON STRUCTURAL SPECIALTY CODE**  
OCCUPANCY TYPE: B, S1  
CONSTRUCTION: V-B  
BUILDING HEIGHT: ACTUAL: 26'-8", ALLOWED 40' + 20' = 60'-0"  
BUILDING AREA:  
FIRST FLOOR.....24,545 S.F.  
SECOND FLOOR.....3,994 S.F.  
TOTAL.....28,544 S.F.  
OCCUPANT LOAD  
FIRST FLOOR.....154 OCCUPANTS  
SECOND FLOOR.....8 OCCUPANTS  
TOTAL.....162 OCCUPANTS  
SPRINKLER SYSTEM:  
NFPA 13 SPRINKLER SYSTEM THROUGHOUT THE BUILDING  
BUILDING AREA MODIFICATION PER 506.1:  
Aa = [ At + [ At x If ] + [ At x Is ] ]  
Aa = [ 9,000 + [ 9,000 x 0.40 ] + [ 9,000 x 2 ] ]  
Aa = [ 9,000 + [ 3,600 ] + [ 18,000 ] ]  
Aa = 30,600 SF  
FRONTAGE INCREASE PER 506.2:  
PERIMETER OF ENTIRE BUILDING = 160 LF  
PERIMETER WHICH FRONTS A PUBLIC WAY OR ACCESSIBLE OPEN SPACE = 488 LF  
MINIMUM WIDTH OF PUBLIC WAY OF ACCESSIBLE OPEN SPACE = 30 FT.  
If = [ F/P - 0.25 ] W/30  
If = [ 418/160 - 0.25 ] 30/30  
If = [ 0.65 - 0.25 ] 1  
If = .40

**ALLOWABLE BUILDING AREA:**

NON-SEPARATED OCCUPANCIES PER 508.3  
\* FIRST FLOOR:  
ACTUAL (B) + ACTUAL (S1) = <1  
ALLOWABLE (B) + ALLOWABLE (S1) = <1  
8,803 S.F. + 15,142 S.F. = <1  
30,600 S.F. + 30,600 S.F. = <1  
29 + S1 = 80 < 1 O.K.  
\* SECOND FLOOR:  
ACTUAL (S1) = <1  
ALLOWABLE (S1) = <1  
3,994 S.F. = <1  
30,600 S.F. = <1  
13 < 1 O.K.

REQUIRED OCCUPANCY SEPARATION, TABLE 508.4:  
NO SEPARATION REQUIRED BETWEEN B AND S1.

**FIRE RESISTANCE RATING FOR BUILDING ELEMENTS (TABLE 601):**

ELEMENT	MATERIAL	RATING
STRUCTURAL FRAME	COMBUSTIBLE	0 HOUR
EXTERIOR BEARING WALL	COMBUSTIBLE	0 HOUR
INTERIOR BEARING WALL	COMBUSTIBLE	0 HOUR
SHAFT ENCLOSURE	COMBUSTIBLE	1 HOUR
FLOOR / CEILING ASSEMBLY	COMBUSTIBLE	0 HOUR
ROOF / CEILING ASSEMBLY	COMBUSTIBLE	0 HOUR

STAIRWAY ENCLOSURES:  
0 HOUR FIRE RATED ENCLOSURES FROM STAIRS PER SECTION 1020.1 EXCEPTION 4.

**MINIMUM PLUMBING FIXTURES**

B: (1ST FLR OFFICE/SHOWROOM): 8,803 / 200 = 44.54 TOTAL = 2 FIXTURES / GENDER  
S1: (1ST & 2ND FLR): 19,141 / 5,000 = 3.9 TOTAL = 2 FIXTURE (EXIST.) Sec. 2902.3

**GENERAL NOTES**

- ALL PENETRATIONS THROUGH RATED WALLS, FLOORS AND ROOFS, INCLUDING STRUCTURAL, MECHANICAL, PLUMBING AND ELECTRICAL ELEMENTS SHALL BE PROPERLY SEALED BY APPROVED AND LISTED MEANS TO MAINTAIN THE REQUIRED RATED ASSEMBLIES BY TRAINED AND KNOWLEDGEABLE INSTALLERS OF THE TRADE PERFORMING THE PENETRATION. THE CONTRACTOR SHALL BE RESPONSIBLE FOR COORDINATION OF ALL TRADES THAT MAKE PENETRATIONS THROUGH RATED ASSEMBLIES. COORDINATE AND VERIFY SIZE AND LOCATIONS OF EACH PENETRATION TO ENSURE THE ABILITY TO PROVIDE A RATED SEAL. SEE SPEC. SECTION 07840.